

# CERTIFICATE OF LOCATION OF GOVERNMENT CORNER

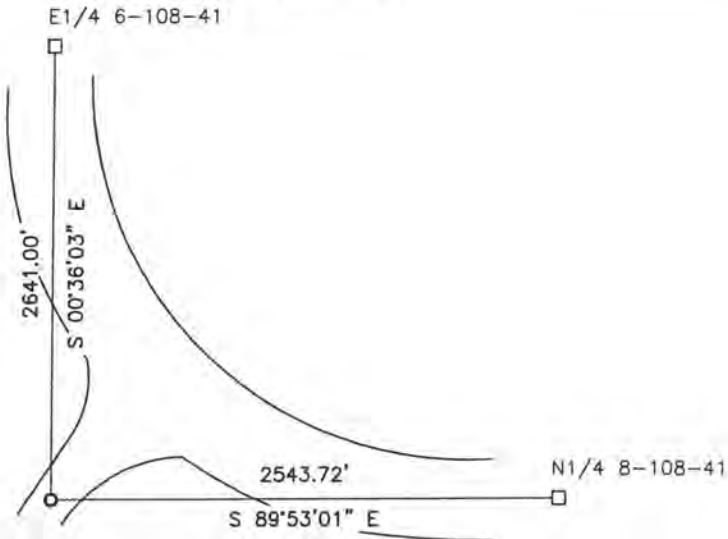
NORTHEAST Corner of Section 7, Township 108, Range 41, 5TH P.M.

STATE OF MINNESOTA, County of MURRAY

At the corner location shown on the sketch:

- On \_\_\_\_\_ found a \_\_\_\_\_
- left monument as found,  lowered monument,  removed monument (explain)
- On 5/2/14 placed a 5/8" iron w/seal #43844

### SKETCH OF REFERENCE TIES



Minnesota State Plane Coordinate  
System Murray County Datum  
NAD83 (1996)  
N: 221619.703  
E: 490099.752

NO TIES

Statement of evidence relative to this corner location is on back of page.

I hereby certify that this document and the data contained herein was prepared by me or under my direct supervision

*[Signature]* 1/14/15  
SIGNATURE DATE

Registration No. 43844

- Land Surveyor,  Professional Engineer
- County Surveyor,  County Engineer

### OFFICE OF THE COUNTY RECORDER

County of \_\_\_\_\_

I hereby certify that this document was filed in the Co. Recorders office at \_\_\_\_\_ .M on the \_\_\_\_\_ day of FEB 20 2015 A.D. 20 \_\_\_\_\_

County Recorder Evelyn C. Larson

By \_\_\_\_\_, Deputy

DOCUMENT NO. \_\_\_\_\_

## Statement of Evidence

In 1861, L.G.M. Fletcher did the original subdivision of the township.

On May 2, 2014, Bueltel-Moseng Land Surveying set a  $\frac{5}{8}$ " iron with seal #43844 on line through the North Quarter and Northeast corner of Section 8-108-41 (found irons with seal #12967), and in line with the road to the north.